



Agpoint Australia



True Blue Australian Made Row Crop, Tines, Clamps & Wedges

Recommended Retail Price List No. 179 Effective 1st November 2023 (GST Not Included)

Please Note: Prices Subject To Change Without Notice

AGPOINT PART NO.	Size	Thickness	Bundle Qty	Bundle Kg	Drum Qty	Unit Price Ea	Application (Guide Only)	Picture for illustration purposes only
------------------	------	-----------	------------	-----------	----------	---------------	--------------------------	--

Alabama Sweeps	High Crown						
-----------------------	-------------------	--	--	--	--	--	--

AL58118	18"	8mm	1	4.7	80		57mm (2 1/4") hole centres
AL58124	24"	8mm	1	6.5	60		Use 1/2" CSK Plow Bolts



Beet Hoe Blade	Fits Rigid Tines						
-----------------------	-------------------------	--	--	--	--	--	--

BH00010L Left Hand	10"	6mm	5	7.2	150		Fits rigid tines TI2-01536
BH00010R Right hand	10"	6mm	5	7.2	150		2 x 3/8" hole & slot: 32mm to 57mm centres



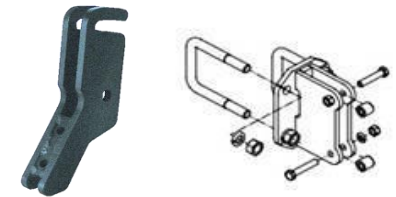
Crescent Hoe	Fits Rigid Tines						
---------------------	-------------------------	--	--	--	--	--	--

CR4-05460 Left Hand	2"	10mm	5	7.0	150		Fits rigid tines TI2-01536
CR4-05459 Right Hand	2'	10mm	5	7.0	150		2 x 3/8" hole & slot: 32mm to 57mm centres



Friction Trip & Friction Trip Clamp Assembly	Use With Shank TI8-01537						
---	---------------------------------	--	--	--	--	--	--

FT2-01539	Friction Trip		1	4.3	120		Friction Trip 1 x 20mm hole, 1 x 18mm slot
CV330581	Friction Trip Clamp 4" x 4" Bar				Each		115mm hole centres. Use with 3" x 1" shank



High Wing Furrowers & Point To Suit (small)	Use With Rigid Tines						
--	-----------------------------	--	--	--	--	--	--

FR9312	12"	6mm	1	2.9	70		3 x 7/16" holes on 44.5mm & 57mm centres
FR9315	15"	6mm	1	3.0	50		
FR6-07486 Wear Point	3 3/4"	6mm	10	7.0	N.A.		





Agpoint Australia



True Blue Australian Made Row Crop, Tines, Clamps & Wedges

Recommended Retail Price List No. 179 Effective 1st November 2023 (GST Not Included)

Please Note: Prices Subject To Change Without Notice

AGPOINT PART NO.	Size	Thickness	Bundle Qty	Bundle Kg	Drum Qty	Unit Price Ea	Application (Guide Only)	Picture for illustration purposes only
---------------------	------	-----------	---------------	--------------	-------------	------------------	-----------------------------	---

High Wing Furrowers & Point To Suit (large)	Use With 3" x 1" Shank & Friction Trip							
--	---	--	--	--	--	--	--	--

FR9318	18"	6mm	1			Each	3 x 1/2" holes on 57mm centres.	
FR9322	22"	6mm	1			Each		
FR9324	24"	6mm	1			Each		
FR6-07925	Wear Point	5 1/2"	6mm	10	15.0	Each		

Ingersoll Furrowers	Use With 3" x 1" Shank & Friction Trip							
----------------------------	---	--	--	--	--	--	--	--

FR09387	12"	6mm	1			Each	Nichols style Furrower - 6mm thickness	
FR09391	15"	6mm	1			Each	Hole & slot or 3 hole available	

Fertiliser Knife								
-------------------------	--	--	--	--	--	--	--	--

GW3031311		9.5mm				Each	GWT13 Fertiliser Knife	
N19B		12.7mm				Quit Price	Genuine Nichols: Hole & Slot. Use 1/2" bolts. 1 3/4" to 3" centres	

Spring Tine & Helper	Fits Case IH & MF							
---------------------------------	------------------------------	--	--	--	--	--	--	--

TI8-00912 Tine	45mm	8mm	1	2.0		Each	Fits various combines and cultivators using	
TI8-00913* Helper	45mm	8mm	1	0.6		Each	3/8" bolt.	



Agpoint Australia



True Blue Australian Made Row Crop, Tines, Clamps & Wedges

Recommended Retail Price List No. 179 Effective 1st November 2023 (GST Not Included)

Please Note: Prices Subject To Change Without Notice

AGPOINT PART NO.	Size	Thickness	Bundle Qty	Bundle Kg	Drum Qty	Unit Price Ea	Application (Guide Only)	Picture for illustration purposes only
------------------	------	-----------	------------	-----------	----------	---------------	--------------------------	--

Front Mounted Coil Tines			Various Size Toolbars			
TI2-01480	25mm L/H Front Mounted	10.0	20	20	2 x 7/16" hole & Slot at 46mm-53mm centres	<p>Tines are identified by standing at the rear of the implement and looking at the direction of travel. If the coil is on RH of leg = RH tine. As shown</p>
TI2-01481	25mm R/H Front Mounted	10.0	20			
TI2-01468	32mm L/H Front Mounted	17.2	20			
TI2-01469	32mm R/H Front Mounted	17.2	20			



Rear Mounted Coil Tines			Various Size Toolbars			
TI2-01484	25mm L/H Rear Mounted	10.0	20	20	2 x 7/16" hole & Slot at 46mm-53mm centres	<p>Tines are identified by standing at the rear of the implement and looking at the direction of travel. If the coil is on RH of leg = RH tine. As shown</p>
TI2-01485	25mm R/H Rear Mounted	10.0	20			
TI2-01472	32mm L/H Rear Mounted	17.2	20			
TI2-01473	32mm R/H Rear Mounted	17.2	20			



Vertical Mounted Coil Tines			Various Size Toolbars			
TI2-01488	25mm L/H Vert. Mounted	10.0	20	20	2 x 7/16" hole & Slot at 46mm-53mm centres	<p>Tines are identified by standing at the rear of the implement and looking at the direction of travel. If the coil is on RH of leg = RH tine. As shown</p>
TI2-01489	25mm R/H Vert. Mounted	10.0	20			
TI2-01476	32mm L/H Vert. Mounted	17.2	20			
TI2-01477	32mm R/H Vert. Mounted	17.2	20			





Agpoint Australia



True Blue Australian Made Row Crop, Tines, Clamps & Wedges

Recommended Retail Price List No. 179 Effective 1st November 2023 (GST Not Included)

Please Note: Prices Subject To Change Without Notice

AGPOINT PART NO.	Size	Thickness	Bundle Qty	Bundle Kg	Drum Qty	Unit Price Ea	Application (Guide Only)	Picture for illustration purposes only
------------------	------	-----------	------------	-----------	----------	---------------	--------------------------	--

Rigid Tines		Various Size Toolbars						
TI2-01535	25mm square 540mm long				Each		2 x 7/16" hole & Slot at 46mm-53mm centres for Chisel Points.	
TI2-01107	32mm square 785mm long				Each		2 x 7/16" hole & Slot at 46mm-53mm centres for Chisel Points.	

Rowcrop Cultivator Shanks		Various Size Toolbars						
TI2-01536	32mm square 740mm long		4.8		Each		3 x 3/8" holes at 32mm-57mm centres to suit <i>Beet Hoe & Crescent Hoe Blades.</i>	

Friction Trip Shanks		Various Size Toolbars						
TI8-01537	75mm x 25mm x 855mm		11.6		Each		1 x 5/8" hole & 1 x 3/4" hole at 115mm centres for friction trips.	



Clamp Assembly For 4" x 4" Bar Now Available



Rigid Tine

TI2-01535

Clamps To Suit Imperial RHS		Various Size Toolbars						
CL2-03896	75x20mm 1 1/4" TINE - 4" BAR		5.0		Each		Use WE2-04346 Wedge	
CL2-01496	75x20mm 1 1/4" TINE - 3 1/2" BAR		5.0		Each		Use WE2-04346 Wedge	
CL2-04273	75x20mm 1 1/4" TINE - 2 1/2" BAR		3.6		Each		Use WE2-04283 Wedge	
CL2-04277	75x20mm 1 1/4" TINE - 2" BAR		2.0		Each		Use WE2-04283 Wedge	
CL2-04279	65x20mm 1" TINE - 2" BAR		2.0		Each		Use WE2-04285 Wedge	



Agpoint Australia



True Blue Australian Made Row Crop, Tines, Clamps & Wedges

Recommended Retail Price List No. 179 Effective 1st November 2023 (GST Not Included)

Please Note: Prices Subject To Change Without Notice

AGPOINT PART NO.	Size	Thickness	Bundle Qty	Bundle Kg	Drum Qty	Unit Price Ea	Application (Guide Only)	Picture for illustration purposes only
---------------------	------	-----------	---------------	--------------	-------------	------------------	-----------------------------	---

Spreader Bar Clamps-Imperial (No Tine Used)					Various Size Toolbars			
---	--	--	--	--	-----------------------	--	--	--

CL2-01495	3 1/2" BAR, 1 1/4" WEDGE		4.5	Each	Use WE2-01497 Wedge			
CL2-04278	2" BAR, 1 1/4" WEDGE		2.0	Each	Use WE2-04283 Wedge			



Wedges					Various Tine & Clamp Combinations			
--------	--	--	--	--	-----------------------------------	--	--	--

WE2-01497	32x220mm		2.0	Each	1 1/4" tine to 3 1/2" bar			
WE2-04283	32x195mm		1.5	Each	1 1/4" tine to 2", 2 1/2", 50mm & 65mm Bar			
WE2-04346	32x258mm		2.0	Each	1 1/4" tine to 3 1/2" & 4" bar			
WE2-04285	25x195mm		1.0	Each	1" tine to 2", 2 1/2", 50mm & 65mm Bar			



Multiweeder Rakes					Various			
-------------------	--	--	--	--	---------	--	--	--

RA3-01383	16mm	LH Fixed	1	Each	Height 692mm, length 325mm, Eye 14.3mm			
RA3-01384	16mm	RH Fixed	1	Each	Height 692mm, length 325mm, Eye 14.3mm			
RA3-01385	19mm	LH Fixed	1	Each	Height 692mm, length 325mm, Eye 14.3mm			
RA3-01386	19mm	RH Fixed	1	Each	Height 692mm, length 325mm, Eye 14.3mm			



Rake Tine

Multiweeder Tracking Rakes					Various			
----------------------------	--	--	--	--	---------	--	--	--

RA3-01448	16mm	Pioneer Tracking		Each	Height 692mm, length 365mm			
RA3-06919	16mm	Bonel L/H Tracking		Each	Height 660mm, length 470mm, Eye 14.3mm			
RA3-01449	16mm	Bonel R/H Tracking		Each	Height 660mm, length 470mm, Eye 14.3mm			



RA3-01448



Agpoint Australia



True Blue Australian Made Row Crop, Tines, Clamps & Wedges

Recommended Retail Price List No. 179 Effective 1st November 2023 (GST Not Included)

Please Note: Prices Subject To Change Without Notice

AGPOINT PART NO.	Size	Thickness	Bundle Qty	Bundle Kg	Drum Qty	Unit Price Ea	Application (Guide Only)	Picture for illustration purposes only
---------------------	------	-----------	---------------	--------------	-------------	------------------	-----------------------------	---

Cultivator Rakes	Various							
-------------------------	----------------	--	--	--	--	--	--	--

RA3-01395	19mm	without Ferrule			Each		Height 686mm, length 816mm, Eye 35mm	
RA3-01396	19mm	with Ferrule			Each		Height 686mm, length 816mm, Eye 25.7mm	
RA3-01400	19mm	with Ferrule			Each		Height 686mm, length 435mm, Eye 25.7mm	

Cotton Rakes	Various							
---------------------	----------------	--	--	--	--	--	--	--

RA3-05111	24mm Inner	with Ferrule			Each		Height 1042mm, length 760mm	
-----------	------------	---------------------	--	--	------	--	-----------------------------	--

Disc Weeder Assembly & Parts	Various							
---	----------------	--	--	--	--	--	--	--

DW60-601614	OM4 Hub Assy.				Each		Disc Weeder Assy. 145-3B Disc (14" Disc)	
DW42-07601	OM5 Hub Assy.				Each		As above with shank on outside	
TI42-01620	36mm Dia Shank x 559mm long				Each		36mm Dia Shank x 22" Long	
DW42-04241	OM4 Hub Convex				Each		Hub for DW60-6016140 Disc Weeder Assy	
DW42-07569	OM5 Hub Concave				Each		Hub for DW42-07601 Disc Weeder Assy	
DW60-601613	OM4 Hub Disc Weeder Less Shank				Each		OM4 Disc Weeder Assy, Less Shank	
DW42-07602	OM5 Hub Disc Weeder Less Shank				Each		OM5 Disc Weeder Assy, Less Shank	

(Note: 22" Shank W 14" Disc)

Chisel Plow Tines	Various Chisel Plows							
--------------------------	-----------------------------	--	--	--	--	--	--	--

TI8-01502	50mm	25mm	1		Each		Shearer Trashworker Tine 668mm Clearance 9/16" hole/slot 53mm-87mm. Rep. P/N 13999	
TI8-01503 (Helper)	50mm	25mm	1		Each		Helper for TI8-01502 Trashworker Tine.	



DW42-07601 Disc On Outside



Chisel Plow Tine & Helper



Agpoint Australia



True Blue Australian Made Row Crop, Tines, Clamps & Wedges

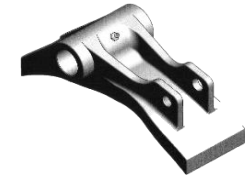
Recommended Retail Price List No. 179 Effective 1st November 2023 (GST Not Included)

Please Note: Prices Subject To Change Without Notice

AGPOINT PART NO.	Size	Thickness	Bundle Qty	Bundle Kg	Drum Qty	Unit Price Ea	Application (Guide Only)	Picture for illustration purposes only
---------------------	------	-----------	---------------	--------------	-------------	------------------	-----------------------------	---

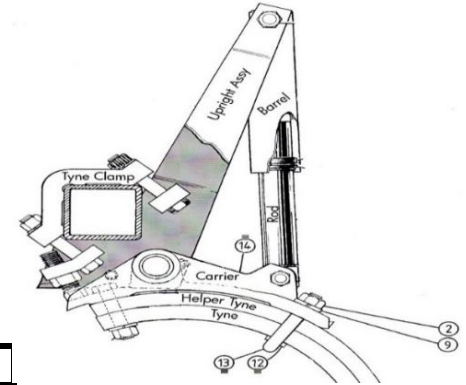
Chisel Plow Tines (cont.)	Various Chisel Plows							
----------------------------------	-----------------------------	--	--	--	--	--	--	--

TI8-01512	50mm	25mm	1		Each		Napier, Jarrett, Yeoman, John Berends 530mm Clearance. 9/16" holes at 60mm centres	
-----------	------	------	---	--	------	--	---	--



Shearer Trashworker Components	Shearer trashworker							
---------------------------------------	----------------------------	--	--	--	--	--	--	--

GW23377TW Tine Carrier Assy	Cast		1		Each		Suit John Shearer Trashworker: Item 14	
GW17075J91			1		Each		Hardened pin to suit above assembly	
GW20269			1		Each		Hardened bush to suit above assembly	
GW17618J1			1		Each		U Bolt Kit (includes nuts & spring washers)	
GW17619J1			1		Each		Tine clamp plate	
TI8-01502			1		Each		Flat On Tine	
TI8-01503			1		Each		Spring Tine Helper To Suit the Above	
GW17643J1			1		Each		Hardened bush to suit barrel rod	



Sugar Cane Parts & Other	Sugar Cane Parts & Other							
-------------------------------------	-------------------------------------	--	--	--	--	--	--	--

T0503031158							Tine to suit Tatu Cane Rake	
-------------	--	--	--	--	--	--	-----------------------------	--



IHC 2-11								
-----------------	--	--	--	--	--	--	--	--

GW804772R3							Cast pivot bracket to suit IH 211 Scarifiers	
------------	--	--	--	--	--	--	--	--

